

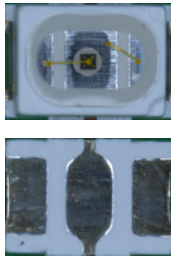
Product Name:

IR3020T12

Product Family:

External IR LEDProduct Description:

IR3020T12 is an external IR LED with a wide viewing angle of 120 degrees at a peak emission wavelength of 940nm.



3.0mm x 2.0mm x 0.8mm

KEY FEATURE LIST

OPTICAL FEATURES:

- Peak emission wavelength at 940nm
- Wide viewing angle of 120 degrees
- Higher optical efficiency

ELECTRICAL DETAILS:

- Forward Voltage: 1.2-1.6V at 100mA
- Reverse Current: Max of 100 μ A
- Radiant Intensity: Typ 10mW/sr at 100mA

AVAILABILITY

MP: Q4, 2014

REV. 1.0.1 , last updated: 120314

DYNAFOR MORE INFORMATION, PLEASE CONTACT: **DYNA-IMAGE CORP.****CONTACTS:**

8F, 233-2, Bao-Qiao Road, Xin-Dian District, Taipei 231, Taiwan, R.O.C.

Phone: +886-2-81958186 Fax: +886229158475 Email: support@dyna-image.com*DYNA IMAGE Confidential, All right reserved*